

ADDENDUM No. 3

Date: 2-16-12

Boynton Beach Community Redevelopment Agency

REQUEST FOR PROPOSALS

GENERAL CONTRACTING SERVICES CONSTRUCTION BID PROPOSAL

For the

JONES COTTAGE COMMERCIAL INTERIOR BUILD-OUT PROJECT

RFP Issue Date: January 23, 2012

Submission Deadline Date: February 23, 2012, No later than 3pm

1. There is an equipment schedule on sheet A-5.1. Is there specification on the equipment? Is this owner provided or is the GC to provide equipment?

Response: Please see attached Cut Sheets. Equipment to be furnished and installed by contractor.

2. There didn't appear to be any "manufacture or specific model information provided regarding the walk-in cooler for cost purposes?

Response: Please see attached Cut Sheets. Equipment to be furnished and installed by contractor.

3. Questions on the "equipment list" including specific model numbers/ manufacturer and who (owner or contractor) would be providing them for cost purposes.

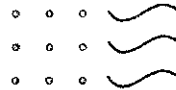
Response: Please see attached Cut Sheets. Equipment to be furnished and installed by contractor.

4. Bids shall be broken down and submitted using the CSI 16 division format.

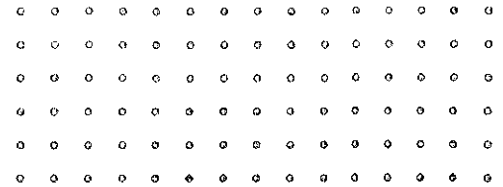
NOR-LAKE, INCORPORATED
 727 Second Street
 P.O. Box 248
 Hudson, Wisconsin 54016

800-955-5253
 715-386-2323
 866-961-5253 Parts
 800-388-5253 Service
 715-386-4291 FAX
 www.norlake.com

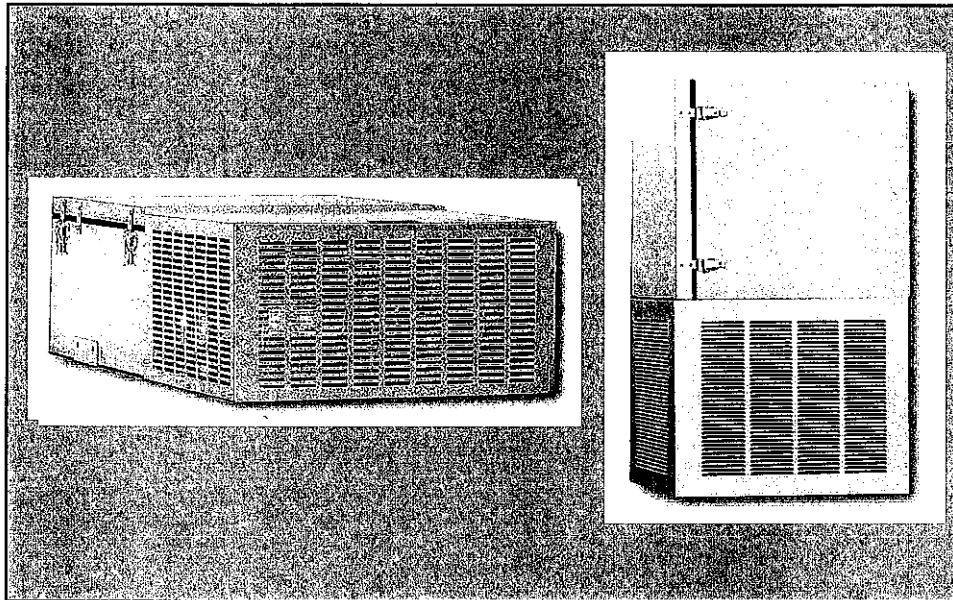
NORLAKE



E-1 & E-2



CAPSULE PAK™ REFRIGERATION SYSTEM



PROJECT:

 ITEM NUMBER:

 MODEL NUMBER:

CAPSULE PAK™ REFRIGERATION SYSTEM

STANDARD FEATURES

- Available for coolers or freezers
- Indoor or outdoor models
- Three temperatures +35°F, -10°F, -20°F
- Ceiling or wall mount
- Air cooled condensing unit
- Automatic condensate vaporizer. No drain lines required on indoor units
- Time clock provided for automatic defrost on both coolers and freezers
- Registered by UL to ISO 9001:2008
- UL and C-UL electrical listing on complete Capsule Pak™ refrigeration systems
- -20°F ambient controls (outdoor models)
- 18 month labor/service warranty

OPTIONAL FEATURES

- Condensing unit air deflector kit
- Heater kit for outdoor use in below 32°F ambient
- Three phase electrical
- Remote Capsule Pak™ refrigeration system
- Electric condensate vaporizer
- Five year compressor warranty

Standard equipment for Nor-Lake
 Kold Locker™ Walk-Ins



Nor-Lake, Inc.
 Registered to ISO 9001:2008
 File No. 10001816

*Most options are available two weeks from receipt of order. Please contact us for specific questions.

SPECIFICATION
 GUIDE

PHYSICAL SPECIFICATIONS

Capsule Pak™ Refrigeration System Specification

Capsule Pak™ refrigeration systems consist of a unitized system which is factory assembled, wired, charged, tested and fully equipped for insertion into a factory prepared walk-in opening. The Capsule Pak™ system has a flush coil which keeps all components outside, allowing more storage inside. Models shall be available for wall or ceiling mounting for use on indoor or outdoor installations. Models are available for interior compartment design (temperatures of +38°F to +35°F, -10°F and -20°F). Installation is fast and easy. No plumbing required on indoor units.

The Capsule Pak™ system evaporator section shall consist of an integral factory assembled component of the complete Capsule Pak™ refrigeration system. The evaporator section shall be designed as to be located entirely outside the walk-in with no intrusions into the refrigerated space. The evaporator enclosure shall be constructed of rigid and foamed-in-place HFC-134a polyurethane insulation and be equipped with a removable gasketed access cover.

All indoor Capsule Pak™ models shall be equipped with a discharge gas condenser vaporizer which requires no plumbing. All outdoor Capsule Pak™ models shall be equipped with low ambient controls consisting of crankcase heater, flooded condenser head pressure control and pump down cycle.

All standard Capsule Pak™ refrigeration systems are stocked for same day shipment.

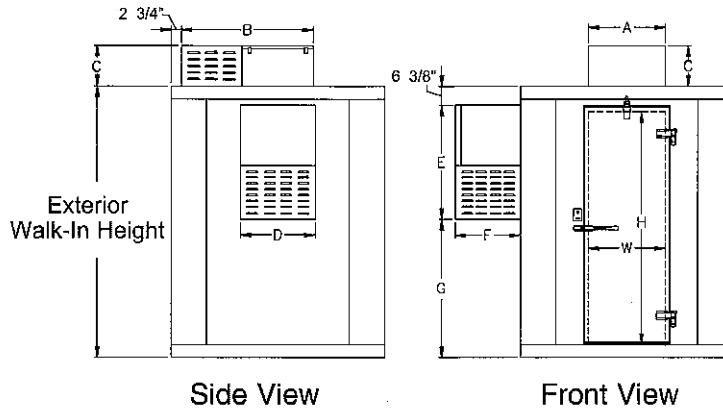
All standard Capsule Pak™ refrigeration systems shall be UL and C-UL listed.

Note: Allow minimum of 6" clearance above the Capsule Pak™ system.



Nor-Lake, Inc.

Registered to ISO 9001:2008
File No. 10001816



Door Opening Size

W	H	Model
26"	59"	45 Series
26"	66"	STD Series
26"	78"	74 Series
26"	78"	77 Series

Capsule-Pak™ Refrigeration Systems

"G" DIMENSION*

Model Number	"A"	"B"	"C"	"D"	"E"	"F"	6'0"	6'7"	7'4"	7'7"
CPB050DC-A	29"	44-1/2"	14-1/2"	N/A	N/A	N/A	N/A	N/A	N/A	N/A
CPB075DC-A	37"	48-1/4"	14-1/2"	N/A	N/A	N/A	N/A	N/A	N/A	N/A
CPB100DC-A	34-1/2"	59"	21-1/4"	N/A	N/A	N/A	N/A	N/A	N/A	N/A
CPF060DC-A	39"	44-1/2"	14-1/2"	N/A	N/A	N/A	N/A	N/A	N/A	N/A
CPF075DC-A	39"	48-1/4"	14-1/2"	N/A	N/A	N/A	N/A	N/A	N/A	N/A
CPF100DC-A	36-1/2"	59"	21-1/4"	N/A	N/A	N/A	N/A	N/A	N/A	N/A
CPF150DC-A	36-1/2"	59"	21-1/4"	N/A	N/A	N/A	N/A	N/A	N/A	N/A
CPF151DC-A	36-1/2"	59"	21-1/4"	N/A	N/A	N/A	N/A	N/A	N/A	N/A
CPX100DC-A	39"	48-1/4"	14-1/2"	N/A	N/A	N/A	N/A	N/A	N/A	N/A
CPX150DC-A	36-1/2"	59"	21-1/4"	N/A	N/A	N/A	N/A	N/A	N/A	N/A
CPX151DC-A	36-1/2"	59"	21-1/4"	N/A	N/A	N/A	N/A	N/A	N/A	N/A
CPF200DC-A	36-1/2"	59"	21-1/4"	N/A	N/A	N/A	N/A	N/A	N/A	N/A
CPB050DCO-A	32"	44-1/2"	14-7/8"	N/A	N/A	N/A	N/A	N/A	N/A	N/A
CPB075DCO-A	43"	48-1/4"	14-7/8"	N/A	N/A	N/A	N/A	N/A	N/A	N/A
CPB100DCO-A	40-1/2"	59-1/2"	22-7/8"	N/A	N/A	N/A	N/A	N/A	N/A	N/A
CPF060DCO-A	43"	44-1/2"	15-7/8"	N/A	N/A	N/A	N/A	N/A	N/A	N/A
CPF075DCO-A	43"	48-1/4"	15-7/8"	N/A	N/A	N/A	N/A	N/A	N/A	N/A
CPF100DCO-A	40-1/2"	59-1/2"	22-7/8"	N/A	N/A	N/A	N/A	N/A	N/A	N/A
CPF150DCO-A	40-1/2"	59-1/2"	22-7/8"	N/A	N/A	N/A	N/A	N/A	N/A	N/A
CPF151DCO-A	40-1/2"	59-1/2"	22-7/8"	N/A	N/A	N/A	N/A	N/A	N/A	N/A
CPF200DCO-A	40-1/2"	59-1/2"	22-7/8"	N/A	N/A	N/A	N/A	N/A	N/A	N/A
CPB050DW	N/A	N/A	N/A	25-1/4"	38-1/4"	22-1/4"	27-3/8"	34-3/8"	43"	46-3/8"
CPB075DW	N/A	N/A	N/A	44-1/8"	45"	30"	N/A	27-5/8"	36-1/4"	39-5/8"
CPF060DW	N/A	N/A	N/A	25-1/4"	38-1/4"	22-1/4"	27-3/8"	34-3/8"	43"	46-3/8"
CPF075DW	N/A	N/A	N/A	25-1/4"	38-1/4"	22-1/4"	N/A	34-3/8"	43"	46-3/8"
CPF100DW	N/A	N/A	N/A	44-1/8"	45"	30"	N/A	27-5/8"	36-1/4"	39-5/8"
CPF150DW	N/A	N/A	N/A	44-1/8"	45"	30"	N/A	27-5/8"	36-1/4"	39-5/8"
CPX100DW	N/A	N/A	N/A	25-1/4"	38-1/4"	22-1/4"	N/A	34-3/8"	43"	46-3/8"
CPX150DW	N/A	N/A	N/A	44-1/8"	45"	30"	N/A	27-5/8"	36-1/4"	39-5/8"
CPX151DW	N/A	N/A	N/A	44-1/8"	45"	30"	N/A	27-5/8"	36-1/4"	39-5/8"
CPB050DWO	N/A	N/A	N/A	25-1/4"	42"	22-3/4"	27-3/8"	34-3/8"	43"	46-3/8"
CPB075DWO	N/A	N/A	N/A	44-1/8"	48-3/4"	30-1/2"	N/A	27-5/8"	36-1/4"	39-5/8"
CPF060DWO	N/A	N/A	N/A	25-1/4"	42"	22-3/4"	27-3/8"	34-3/8"	43"	46-3/8"
CPF075DWO	N/A	N/A	N/A	25-1/4"	42"	22-3/4"	N/A	34-3/8"	43"	46-3/8"
CPF100DWO	N/A	N/A	N/A	44-1/8"	48-3/4"	30-1/2"	N/A	27-5/8"	36-1/4"	39-5/8"
CPF150DWO	N/A	N/A	N/A	44-1/8"	48-3/4"	30-1/2"	N/A	27-5/8"	36-1/4"	39-5/8"
CPF151DWO	N/A	N/A	N/A	44-1/8"	48-3/4"	30-1/2"	N/A	27-5/8"	36-1/4"	39-5/8"

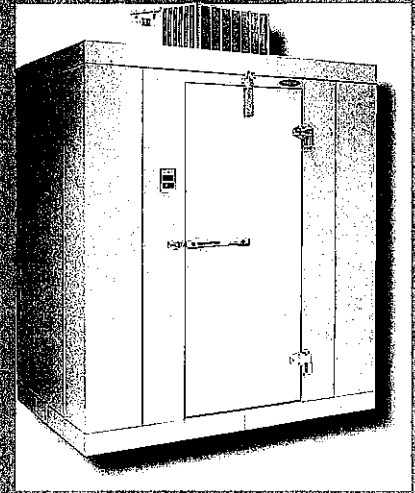
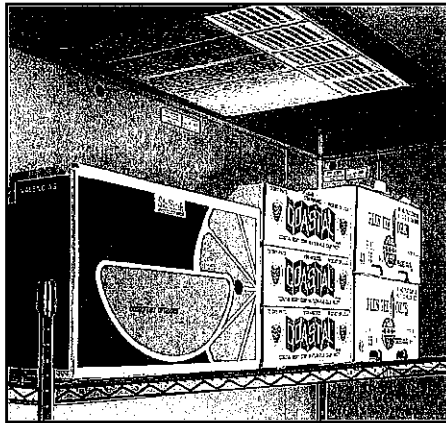
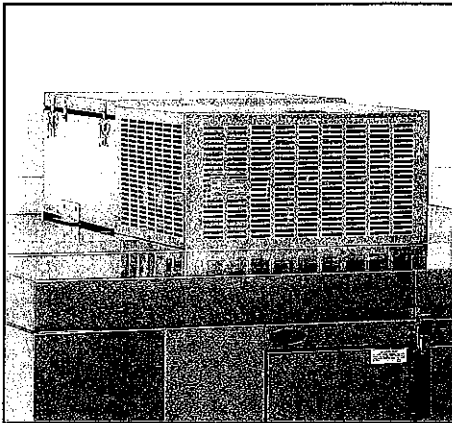
Consideration must be given to accessibility for service & free condenser air flow.

Consult Factory.

Subject to change without notice

* Exterior Walk-In Height

ELECTRICAL DATA



Capsule-Pak™ Refrigeration Systems

Model Number	Horsepower	Volts/Hz/Ph	Defrost AMPS	Total Systems AMPS	Minimum Circuit AMPS	Maximum Fuse Size	Refrigerant
CPB050DC-A	5/8	115/60/1	N/A	14.3	16.1	20	R-404A
CPB075DC-A	7/8	208-230/60/1	N/A	8.6	9.3	15	R-404A
CPB100DC-A	1	208-230/60/1	N/A	12.0	14.4	20	R-404A
CPF060DC-A	5/8	208-230/60/1	6.95	7.7	9.2	15	R-404A
CPF075DC-A**	3/4	208-230/60/1	14.9	8.4	14.9	15	R-404A
CPF100DC-A	1	208-230/60/1	8.9	8.3	10.2	15	R-404A
CPF150DC-A HD	1-1/2	208-230/60/1	12.8	12.0	13.9	20	R-404A
CPF151DC-A HD	1-1/2	208-230/60/1	10.22	11.6	13.4	20	R-404A
CPF200DC-A	2	208-230/60/1	11.4	15.7	17.7	20	R-404A
CPX100DC-A**	1	208-230/60/1	13.5	8.3	13.5	15	R-404A
CPX150DC-A* HD	1-1/2	208-230/60/1	9.2	11.4	15.2	20	R-404A
CPX151DC-A* HD	1-1/2	230/60/1	12.9	15.3	19.7	25	R-404A
CPB050DCO-A	5/8	115/60/1	N/A	14.7	18.0	25	R-404A
CPB075DCO-A	7/8	208-230/60/1	N/A	9.3	10.3	15	R-404A
CPB100DCO-A	1	208-230/60/1	N/A	10.6	13.3	20	R-404A
CPF060DCO-A**	5/8	208-230/60/1	13.6	7.6	13.6	15	R-404A
CPF075DCO-A**	3/4	208-230/60/1	14.6	8.6	14.6	15	R-404A
CPF100DCO-A	1	208-230/60/1	8.9	7.0	10.1	15	R-404A
CPF150DCO-A HD	1-1/2	208-230/60/1	10.7	9.8	12.0	15	R-404A
CPF151DCO-A HD	1-1/2	230/60/1	8.45	11.7	13.95	25	R-404A
CPF200DCO-A	2	208-230/60/1	10.3	14.2	16.4	20	R-404A
CPB050DW	1/2	115/60/1	N/A	12.2	14.4	20	R-404A
CPB075DW	3/4	208-230/60/1	N/A	8.4	9.7	15	R-404A
CPF060DW**	5/8	208-230/60/1	8.34	6.2	8.34	15	R-404A
CPF075DW**	3/4	208-230/60/1	9.9	7.9	9.9	15	R-404A
CPF100DW	1	208-230/60/1	7.1	8.1	9.7	15	R-404A
CPF150DW HD	1-1/2	208-230/60/1	7.1	11.2	14.2	20	R-404A
CPX100DW**	1	208-230/60/1	8.3	8.7	9.3	15	R-404A
CPX150DW HD	1-1/2	208-230/60/1	7.1	11.4	14.9	20	R-404A
CPX151DW HD	1-1/2	230/60/1	7.1	15.3	19.5	25	R-404A
CPB050DWO	1/2	115/60/1	N/A	12.4	14.7	20	R-404A
CPB075DWO	3/4	208-230/60/1	N/A	8.8	10.6	15	R-404A
CPF060DWO**	5/8	208-230/60/1	9.6	7.0	9.6	15	R-404A
CPF075DWO**	3/4	208-230/60/1	9.9	7.0	9.9	15	R-404A
CPF100DWO	1	208-230/60/1	7.5	8.5	10.1	15	R-404A
CPF150DWO HD	1-1/2	208-230/60/1	7.5	11.5	14.6	20	R-404A
CPF151DWO HD	1-1/2	230/60/1	7.5	11.4	14.4	20	R-404A

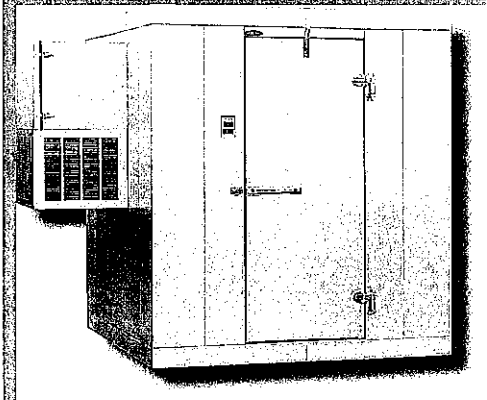
NOTE: * Hot gas defrost

** These systems have 115 volt fan motors and/or drain line heaters which will require 115/208-230/60/1, AC 4 wire service

Subject to change without notice

Ceiling Mount Capsule Pak™ System

Ceiling Mount Capsule Pak™ systems are conveniently located on top of the walk-in to maximize available floor space. Available in indoor and outdoor models for single or dual walk-in compartments. Ceiling mount systems are available for same day shipment.



Wall Mount Capsule Pak™ System

The Wall Mount Capsule Pak™ System provides easy access for service and installation where there is not enough room for a ceiling-mounted application. Available in indoor and outdoor models for single or dual walk-in compartments. Wall Mount Systems are available to ship in ten days.



**BUILDING AND NEIGHBORHOOD COMPLIANCE DEPARTMENT (BNC)
BOARD AND CODE ADMINISTRATION DIVISION**

**MIAMI-DADE COUNTY
PRODUCT CONTROL SECTION**
11805 SW 26 Street, Room 208
Miami, Florida 33175-2474
T (786) 315-2590 F (786) 315-2599

www.miamidade.gov/building

NOTICE OF ACCEPTANCE (NOA)

Nor-Lake, Incorporated
727 Second Street, PO Box 248
Hudson, WI 54016

SCOPE:

This NOA is being issued under the applicable rules and regulations governing the use of construction materials. The documentation submitted has been reviewed and accepted by Miami-Dade County BNC-Product Control Section to be used in Miami Dade County and other areas where allowed by the Authority Having Jurisdiction (AHJ).

This NOA shall not be valid after the expiration date stated below. The Miami-Dade County Product Control Section (In Miami Dade County) and/or the AHJ (in areas other than Miami Dade County) reserve the right to have this product or material tested for quality assurance purposes. If this product or material fails to perform in the accepted manner, the manufacturer will incur the expense of such testing and the AHJ may immediately revoke, modify, or suspend the use of such product or material within their jurisdiction. BNC reserves the right to revoke this acceptance, if it is determined by Miami-Dade County Product Control Section that this product or material fails to meet the requirements of the applicable building code.

This product is approved as described herein, and has been designed to comply with the High Velocity Hurricane Zone of the Florida Building Code.

DESCRIPTION: Walk-In Coolers and Freezers

APPROVAL DOCUMENT: Drawing No. 11-NOR-02, titled "Walk-In Cooler/Freezer", sheets 1 through 5 of 5, prepared by Knezevich Consulting, LLC, dated March 21, 2011, signed and sealed by J. W. Knezevich, P.E., on April 20, 2011, bearing the Miami-Dade County Product Control Revision stamp with the Notice of Acceptance number and the expiration date by the Miami-Dade County Product Control Section.

MISSILE IMPACT RATING: Large and Small Missile Impact Resistant

LABELING: Each unit shall bear a permanent label with the manufacturer's name or logo, city, state and the following statement: "Miami-Dade County Product Control Approved", unless otherwise noted herein.

RENEWAL of this NOA shall be considered after a renewal application has been filed and there has been no change in the applicable building code negatively affecting the performance of this product.

TERMINATION of this NOA will occur after the expiration date or if there has been a revision or change in the materials, use, and/or manufacture of the product or process. Misuse of this NOA as an endorsement of any product, for sales, advertising or any other purposes shall automatically terminate this NOA. Failure to comply with any section of this NOA shall be cause for termination and removal of NOA.

ADVERTISEMENT: The NOA number preceded by the words Miami-Dade County, Florida, and followed by the expiration date may be displayed in advertising literature. If any portion of the NOA is displayed, then it shall be done in its entirety.

INSPECTION: A copy of this entire NOA shall be provided to the user by the manufacturer or its distributors and shall be available for inspection at the job site at the request of the Building Official.

This NOA **revises & renews** NOA # 08-0602.11 and consists of this page 1, evidence submitted pages E-1, E-2, E-3 & E-4 as well as approval document mentioned above.

The submitted documentation was reviewed by **Helmy A. Makar, P.E., M.S.**



Helmy A. Makar
06/16/2011

NOA No. 11-0425.02
Expiration Date: 05/10/2012
Approval Date: 06/16/2011
Page 1

Nor-Lake, Incorporated

NOTICE OF ACCEPTANCE: EVIDENCE SUBMITTED

1. EVIDENCE SUBMITTED UNDER PREVIOUS APPROVAL # 00-1212.01

A. DRAWINGS

1. *Drawing No. 00-094, titled "Walk-in Cooler/Freezer", prepared by Knezevich & Associates, Inc., dated December 7, 2000, last revision #3 dated April 19, 2001, sheets 1 through 5 of 5, signed and sealed by V. J. Knezevich, P.E.*

B. TESTS

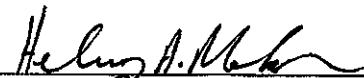
1. *Test report on 24 Hour Live Load Test, Large Missile Impact Test, Cyclic Load Test and Uniform Static air Pressure Test, Axial Load Test, and Racking load Test on Metal Sheathed Urethane Foam Filled Modular Panel Walk-in Coolers / Freezers, prepared by Construction Testing Corporation, Report No. 00-027, dated November 6, 2000, signed and sealed by Yamil Kuri, P.E.*

C. CALCULATIONS

1. *Calculation titled "Walk-in Cooler / Freezer", dated 12/07/2000, pages 1 through 27 of 27, prepared by Knezevich & Associates, Inc., signed and sealed by V. J. Knezevich, P.E.*
2. *Calculation titled "Walk-in Cooler / Freezer", dated 03/13/2001, 3 pages, prepared by Knezevich & Associates, Inc., signed and sealed by V. J. Knezevich, P.E.*

D. MATERIAL CERTIFICATIONS

1. *Mill Certified Test Report issued by Thyssen Krupp Stahl, dated 11/01/2000, with the Chemical analysis and Mechanical Properties for 27 gauge Steel conforming to ASTM A-875.*
2. *Mill Certified Test Report issued by Viking Materials, Inc., dated 03/21/2000, with the Chemical composition and Mechanical Properties for 26 gauge Steel Regular Spangle.*
3. *Mill Certified Test Report issued by Scottsboro, dated 01/04/00, with the Chemical composition and Mechanical Properties for 0.032" thick 3003-H14 Aluminum Alloy.*
4. *Tensile Test Report No. CTL #1106F, prepared by Certified Testing Laboratories, dated 11/08/2000, signed and sealed by Ramesh Patel, P.E.*
5. *Tensile Test Report No. CTL #1107F, prepared by Certified Testing Laboratories, dated 11/08/2000, signed and sealed by Ramesh Patel, P.E.*
6. *Report #R8058, by UL, dated 07/25/97, for Flame Spread Index and Smoke Developed Index.*
7. *Report #R8058, by UL, dated 03/03/98, for Flame Spread Index and Smoke Developed Index.*



Helmy A. Makar, P.E., M.S.
BNC, Product Control Unit Supervisor
NOA No. 11-0425.02
Expiration Date: 05/10/2012
Approval Date: 06/16/2011

Nor-Lake, Incorporated

NOTICE OF ACCEPTANCE: EVIDENCE SUBMITTED

2. EVIDENCE SUBMITTED UNDER PREVIOUS APPROVAL #02-0826.04

A. DRAWINGS

1. *Drawing No. 00-094, titled " Walk-In Cooler/Freezer ", sheets 1 through 5 of 5, prepared by Knezevich & Associates, Inc., dated December 07, 2000, last revision #4 dated July 10, 2002 signed and sealed by V. J. Knezevich, P.E.*

B. TESTS

1. *None.*

C. CALCULATIONS

1. *Design Calculations and structural analysis, prepared by Knezevich & Associates, Inc., pages 1 through 5 of 5, dated August 09, 2002, signed and sealed by V. J. Knezevich, P.E.*

D. MATERIAL CERTIFICATIONS

1. *None.*

E. STATEMENTS

1. *Statement letter of conformance, dated August 09, 2002, prepared by Knezevich & Associates, Inc., signed and sealed by V. J. Knezevich, P.E.*

3. EVIDENCE SUBMITTED UNDER PREVIOUS APPROVAL # 05-0926.07

A. DRAWINGS

1. *Drawing No. 05-387, titled " Walk-In Cooler/Freezer ", sheets 1 through 5 of 5, prepared by Thornton-Tomasetti Group, dated September 22, 2005, last revision #1 dated September 22, 2005, signed and sealed by J. W. Knezevich, P.E.*

B. TESTS

1. *None.*

C. CALCULATIONS

1. *Design Calculations and structural analysis, prepared by Thornton-Tomasetti group, pages 1 through 13 of 13, dated September 22, 2005, signed and sealed by John W. Knezevich, P.E.*

D. QUALITY ASSURANCE

1. *By Miami-Dade County Building Code Compliance Office.*

E. MATERIAL CERTIFICATIONS

1. *None.*



Helmy A. Makar, P.E., M.S.

BNC, Product Control Unit Supervisor

NOA No. 11-0425.02

Expiration Date: 05/10/2012

Approval Date: 06/16/2011

Nor-Lake, Incorporated

NOTICE OF ACCEPTANCE: EVIDENCE SUBMITTED

4. EVIDENCE SUBMITTED UNDER PREVIOUS APPROVAL #06-0125.02

A. DRAWINGS

1. *None.*

B. TESTS

1. *None.*

C. CALCULATIONS

1. *None.*

D. QUALITY ASSURANCE

1. By Miami-Dade County Building Code Compliance Office.

E. MATERIAL CERTIFICATIONS

1. *None.*

5. EVIDENCE SUBMITTED UNDER PREVIOUS APPROVAL #08-0602.11

A. DRAWINGS

1. *Drawing No. 08-107, titled "Walk-In Cooler/Freezer", sheets 1 through 5 of 5, prepared by Knezevich Consulting, LLC, dated May 12, 2008, signed and sealed by J. W. Knezevich, P.E., on May 12, 2008.*

B. TESTS

1. *None.*

C. CALCULATIONS

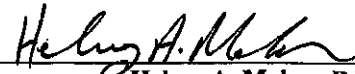
1. *None.*

D. QUALITY ASSURANCE

1. By Miami-Dade County Building Code Compliance Office.

E. MATERIAL CERTIFICATIONS

1. *None.*



Helmy A. Makar, P.E., M.S.
BNC, Product Control Unit Supervisor
NOA No. 11-0425.02
Expiration Date: 05/10/2012
Approval Date: 06/16/2011

Nor-Lake, Incorporated

NOTICE OF ACCEPTANCE: EVIDENCE SUBMITTED

6. NEW EVIDENCE SUBMITTED

A. DRAWINGS

1. *Drawing No. 11-NOR-02, titled " Walk-In Cooler/Freezer ", sheets 1 through 5 of 5, prepared by Knezevich Consulting, LLC, dated March 21, 2011, signed and sealed by J. W. Knezevich, P.E., on April 20, 2011.*

B. TESTS

1. *None.*

C. CALCULATIONS

1. *None.*

D. QUALITY ASSURANCE

1. *By Miami-Dade County Building and Neighborhood Compliance department.*

E. MATERIAL CERTIFICATIONS

1. *None.*



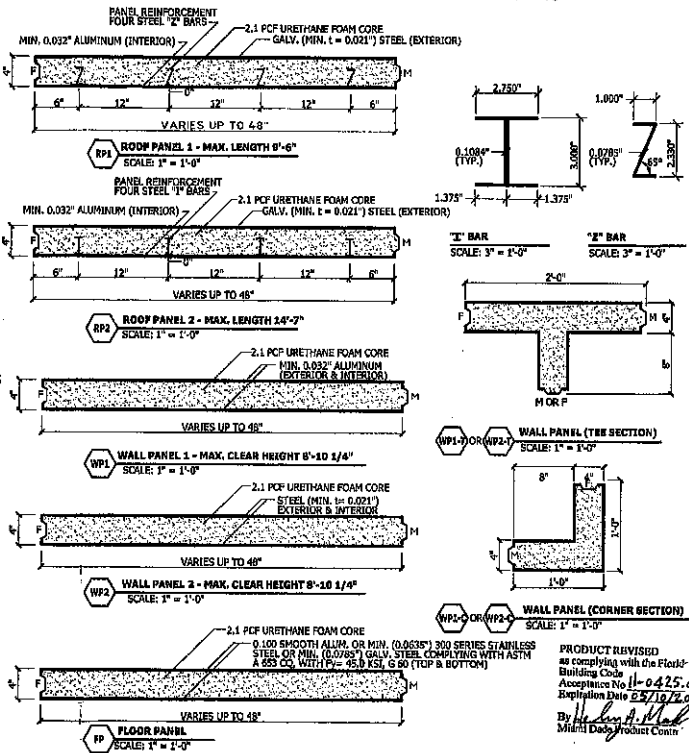
Helmy A. Makar, P.E., M.S.
BNC, Product Control Unit Supervisor
NOA No. 11-0425.02
Expiration Date: 05/10/2012
Approval Date: 06/16/2011

GENERAL NOTES:

- THESE PRODUCT EVALUATION DOCUMENTS REPRESENT A WALK-IN COOLER/FREEZER SYSTEM GENERALIZED WITH THE PROVISIONS SET FOR THE ISSUANCE OF A NOTICE OF ACCEPTANCE FROM THE MIAMI-DADE COUNTY BUILDING AND NEIGHBORHOOD COMPLIANCE DEPARTMENT. THESE DOCUMENTS COMPLY WITH THE HIGH VELOCITY HURRICANE ZONE (HVHZ) PROVISIONS OF THE FLORIDA BUILDING CODE (FBC), 2007 EDITION WITH 2009 SUPPLEMENTS.
- FOR AREAS OUTSIDE OF THE HVHZ, SITE SPECIFIC ENGINEERING IS REQUIRED TO VERIFY THE SITE SPECIFIC DESIGN WIND LOADS AND PANEL TESTING COMPLY WITH THE TESTING REQUIREMENTS OF FBC SECTION 1714.3.1.
- DESIGN LOADS:
 - ROOF:
 - DEAD LOAD: PANEL TYPE 1 3.5 PSF
 - DEAD LOAD: PANEL TYPE 2 3.5 PSF
 - LIVE LOAD: 30.0 PSF
 - MAXIMUM WEIGHT OF MECHANICAL EQUIPMENT IS 330 LBS. PER CONDENSING UNIT. SPACE UNITS AT LEAST 4'-0" O.C.
 - WALLS:
 - DEAD LOAD: PANEL TYPE 1 1.6 PSF
 - DEAD LOAD: PANEL TYPE 2 1.6 PSF
 - FLOOR:
 - DEAD LOAD: FLOOR PANEL 5.0 PSF
 - LIVE LOAD: INSULATED FLOOR 250 PSF
 - LIVE LOAD: FLOORLESS 250 PSF
- WIND LOADS SHALL BE DETERMINED IN ACCORDANCE WITH THE CODE PROVISIONS AT THE TIME OF PERMIT BASED ON THE SITE SPECIFIC CONDITIONS. SEE TABLE 1 ON SHEET 2 FOR ALLOWABLE WIND LOADS USED IN THE DESIGN OUTLINED WITHIN THESE DOCUMENTS. THE WIND LOADS REFERENCED WITHIN THESE DOCUMENTS ARE ALLOWABLE LOADS CONSISTENT WITH ASCE 7-05 TERMINOLOGY.
- THESE APPROVAL DOCUMENTS ARE GENERIC AND DO NOT INCLUDE INFORMATION FOR SITE SPECIFIC APPLICATION OF THIS WALK-IN COOLER/FREEZER SYSTEM.
- THESE DOCUMENTS REPRESENT THE STRUCTURAL AND MATERIAL REQUIREMENTS OF THE WALK-IN COOLER/FREEZER STRUCTURE. THESE APPROVAL DOCUMENTS SHALL NOT BE APPLIED BY THE CONTRACTOR ON A SPECIFIC SITE WITHOUT THE INVOLVEMENT OF AN ARCHITECT OR ENGINEER OF RECORD (A/E/O/R). THE A/E/O/R SHALL BE RESPONSIBLE FOR COMPLIANCE WITH THE CODE REQUIREMENTS OF A SPECIFIC INSTALLATION INCLUDING BUT NOT LIMITED TO THE FOLLOWING:
 - VERIFY THE SITE SPECIFIC WIND LOAD REQUIREMENTS ARE WITHIN THE CRITERIA USED TO DEVELOP THESE DOCUMENTS AND THE UNIT IS CONFIGURED IN COMPLIANCE WITH THE LIMITATIONS HEREIN.
 - VERIFY THE FOUNDATION DESIGN IS ADEQUATE TO RESIST THE FOUNDATION LOADS IDENTIFIED IN TABLE 1.
 - VERIFY THE EXISTING BUILDING IS ADEQUATE TO RESIST THE SUPERIMPOSED LOADS IDENTIFIED IN TABLE 1.
 - WEATHER PROTECTION, ARCHITECTURAL, MECHANICAL, AND ELECTRICAL REQUIREMENTS ARE OUTSIDE THE SCOPE OF THESE DOCUMENTS. DETERMINE AND/OR PROVIDE FOR COMPLIANCE WITH THE REQUIREMENTS OF THE AUTHORITY HAVING JURISDICTION.
- THESE APPROVAL DOCUMENTS COMPLY WITH CHAPTER 61G15-23 OF THE FLORIDA ADMINISTRATIVE CODE.
- ANY MODIFICATIONS OR ADDITIONS TO THESE APPROVAL DOCUMENTS WILL VOID THE APPROVAL DOCUMENTS.
- WHEN THE SITE CONDITIONS DEVIATE FROM THESE APPROVAL DOCUMENTS, THE BUILDING OFFICIAL SHALL REQUIRE THAT A ONE-TIME SITE SPECIFIC APPROVAL BE APPLIED FOR AND SECURED FROM THE MIAMI-DADE COUNTY PRODUCT CONTROL DIVISION.
- ALL BOLTS AND SCREWS SHALL BE 2024-T4 ALUMINUM ALLOY, ELECTRO-GALVANIZED STEEL, HOT DIPPED GALVANIZED STEEL OR 300 SERIES STAINLESS STEEL WITH A MIN. TENSILE STRENGTH OF 60 KSI.
- ALL CONCRETE ANCHORS SHALL BE AS SPECIFIED ON THE DRAWINGS. EMBEDMENT LENGTHS NOTED ON THE DRAWINGS SHALL NOT INCLUDE FINISH MATERIAL.
- DISSIMILAR METALS IN CONTACT WITH EACH OTHER SHALL BE PROTECTED IN ACCORDANCE WITH THE FBC CHAPTER 20, SECTION 2003.3.4.
- AN ALLOWABLE STRESS INCREASE IS NOT USED IN THE DESIGN OF THE COOLER/FREEZER UNIT NOR ITS ATTACHMENTS.

RIGID URETHANE FOAM SANDWICH PANEL SPECIFICATIONS

- WALL & ROOF COMPOSITE SANDWICH PANELS ARE COMPRISED OF ALUMINUM OR STEEL FACINGS WITH Poured URETHANE PLASTIC CORES. THICKNESS AND MATERIAL OF FACINGS SHALL BE AS SHOWN ON THE DRAWINGS.
- ALUMINUM FACINGS SHALL BE 3003-H14 ALLOY FOR INTERIOR AND EXTERIOR USE.
- STEEL FACINGS USED ON WALL PANELS SHALL COMPLY WITH ASTM A 675 CQ WITH A MIN. Fy = 31.0 ksi, MIN. THICKNESS OF 0.021" AND A G-90 COATING.



- STEEL FACINGS USED ON ROOF PANELS, TOP SIDE, SHALL COMPLY WITH ONE OF THE FOLLOWING:
 - ASTM A 653 CQ WITH A MIN. Fy 45 ksi, MIN. THICKNESS OF 0.021" AND G 90 COATING.
 - ASTM A 653 SQ WITH A MIN. Fy 45 ksi, MIN. THICKNESS OF 0.021" AND G 90 COATING.
- MINIMUM DENSITY OF URETHANE PANEL CORE SHALL BE 2.1 P.C.F.
- URETHANE FOAM CORE SHALL HAVE A FLAME SPREAD RATING OF NOT MORE THAN 75 AND SHALL HAVE A SMOKE-DEVELOPED RATING OF NOT MORE THAN 450 IN ACCORDANCE WITH F.B.C. 2612.3.1.1.
- METAL FACINGS SHALL BE ADHERED TO FOAM WITH AN AIR SPRAY COATING OF 3M FAST BOND TM 5 GREEN ADHESIVE AT A RATE OF 0.147 FLUID OUNCES PER SQUARE FOOT.
- FOR SPECIFIC REQUIREMENTS OF FOAM PLASTICS IN WALK-IN COOLERS, SEE F.B.C. 2612.3.2.1 AND 2612.3.2.2.

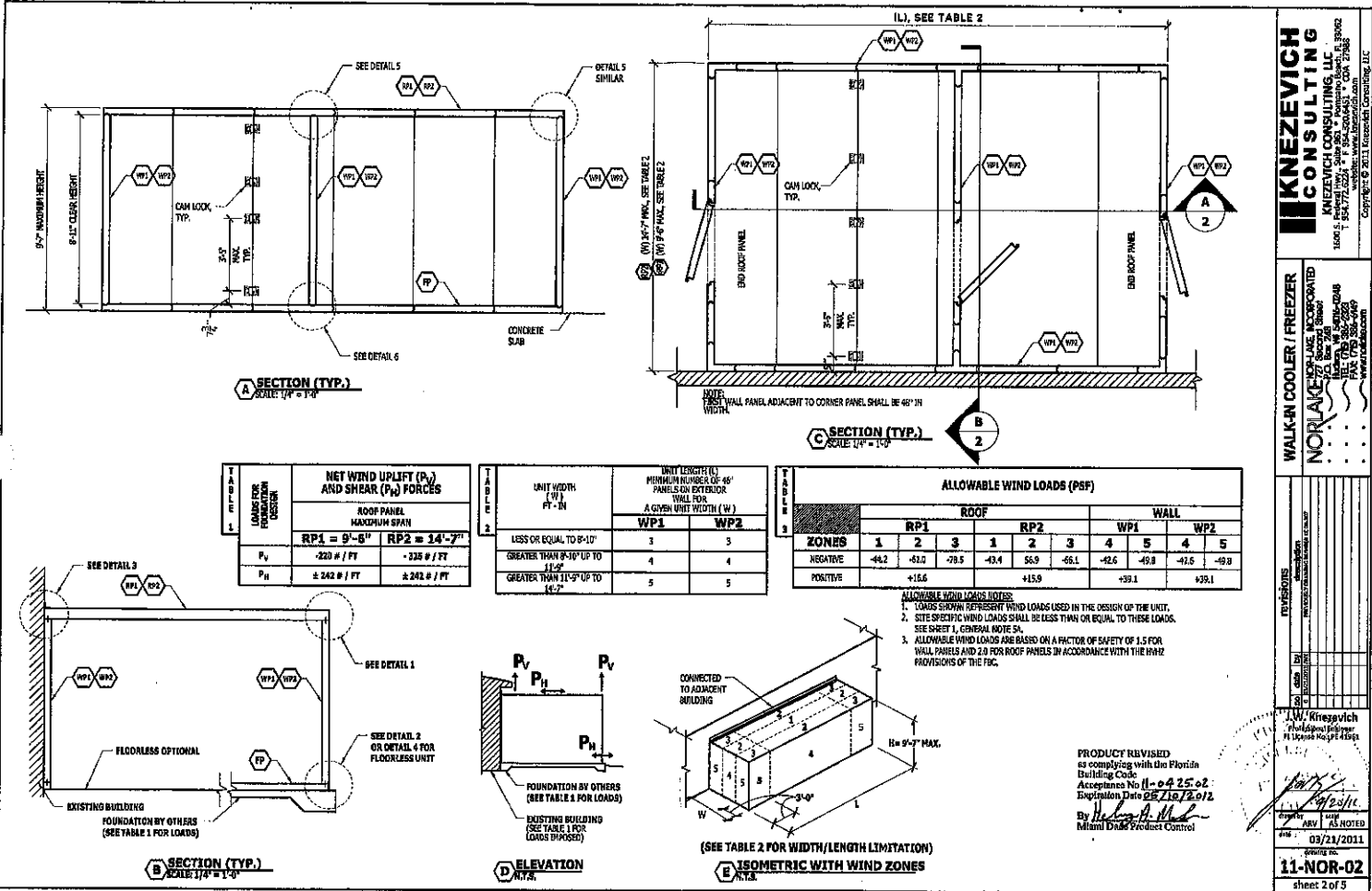
KNEZEVICH CONSULTING
 KNEZEVICH CONSULTING, LLC
 1640 S. Krome Ave., Suite 500, Westwood Lakes, FL 33062
 1-877-777-9999
 www.knezevich.com

WALK-IN COOLER / FREEZER
 NO. 11-0425-02
 Revision 02/10/2011

PRODUCT REVISED as complying with the Florida Building Code Acceptance No 11-0425-02 Expiration Date 02/10/2012
 By: *[Signature]*
 Miami Dade Product Control

J.W. Knezevich
 Professional Engineer
 118 George Muehl St. #101

DATE: 03/21/2011
 AS NOTED
 11-NOR-02
 sheet 1 of 5



A SECTION (TYP.)
SCALE: 1/4" = 1'-0"

C SECTION (TYP.)
SCALE: 1/4" = 1'-0"

B SECTION (TYP.)
SCALE: 1/4" = 1'-0"

D ELEVATION
N.T.S.

E ISOMETRIC WITH WIND ZONES
N.T.S.

LOAD TYPE FOUNDATION DESIGN	NET WIND UPLIFT (P_u) AND SHEAR (P_v) FORCES	
	ROOF PANEL MAXIMUM SPAN	
	RP1 = 9'-6"	RP2 = 14'-7"
P_u	-220 # / FT	-320 # / FT
P_v	± 242 # / FT	± 242 # / FT

UNIT WIDTH (W) FT.-IN.	UNIT LENGTH (L) MINIMUM NUMBER OF 45° PANELS ON EXTERIOR WALL FOR A GIVEN UNIT WIDTH (W)	
	WP1	WP2
LESS OR EQUAL TO 8'-10"	3	3
GREATER THAN 8'-10" UP TO 11'-0"	4	4
GREATER THAN 11'-0" UP TO 16'-2"	5	5

ZONES	ALLOWABLE WIND LOADS (PSF)							
	ROOF				WALL			
	1	2	3	4	1	2	3	4
NEGATIVE	-44.2	-51.0	-78.5	-43.4	-56.9	-58.1	-42.6	-49.3
POSITIVE	+15.6			+15.9			+39.1	

ALLOWABLE WIND LOADS NOTES:
 1. LOADS SHOWN REPRESENT WIND LOADS USED IN THE DESIGN OF THE UNIT.
 2. SITE SPECIFIC WIND LOADS SHALL BE LESS THAN OR EQUAL TO THESE LOADS.
 SEE SHEET 1, GENERAL NOTE 5A.
 3. ALLOWABLE WIND LOADS ARE BASED ON A FACTOR OF SAFETY OF 1.5 FOR
 WALL PANELS AND 2.0 FOR ROOF PANELS IN ACCORDANCE WITH THE WIND
 PROVISIONS OF THE IRC.

PRODUCT REVISED
 as complying with the Florida
 Building Code
 Accepted No. 11-04 25-02
 Expiration Date 08/10/2012
 By: *Michael D. M. Product Control*
 Michael D. M. Product Control

KNEZEVICH CONSULTING
 KNEZEVICH CONSULTING, LLC
 1600 S. FEDERAL HWY. SUITE 200, PALM BEACH, FL 33409
 1-800-747-7474 FAX: 561-832-5049
 www.knezevich.com
 Copyright © 2011 Knezevich Consulting, LLC

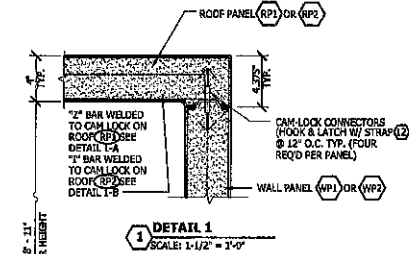
WALK-IN COOLER / FREEZER
NORLAIR OF LAKE, INCORPORATED
 1000 S. FEDERAL HWY. SUITE 200, PALM BEACH, FL 33409
 1-800-747-7474 FAX: 561-832-5049
 www.norlair.com

REVISED
 APPROVED
 DATE
 BY
 FOR

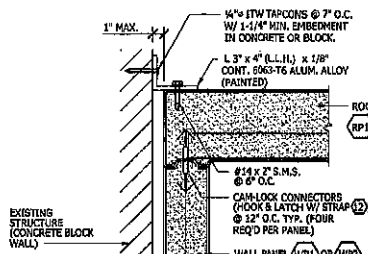
11-NOR-02
 sheet 2 of 5

NO.	REVISIONS	DATE

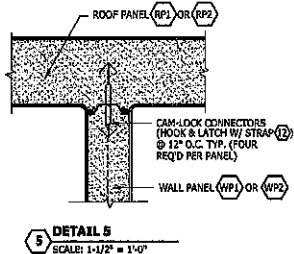
J.W. Knezvich
 Professional Engineer
 No. 12456
 State of Florida
 Exp. 03/21/2011
 By: *[Signature]*
 Miami Design Product Control



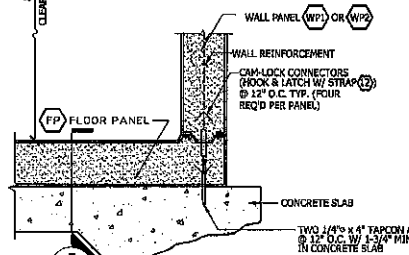
1 DETAIL 1
 SCALE: 1-1/2" = 1'-0"



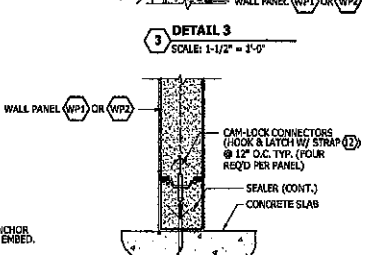
3 DETAIL 3
 SCALE: 1-1/2" = 1'-0"



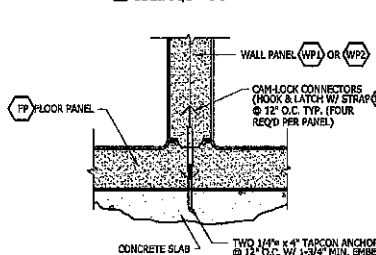
5 DETAIL 5
 SCALE: 1-1/2" = 1'-0"



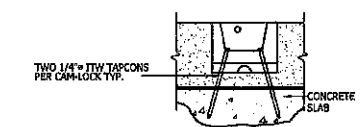
2 DETAIL 2
 SCALE: 1-1/2" = 1'-0"



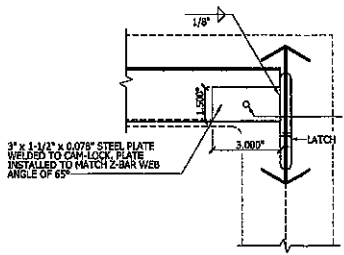
4 DETAIL 4
 SCALE: 1-1/2" = 1'-0"



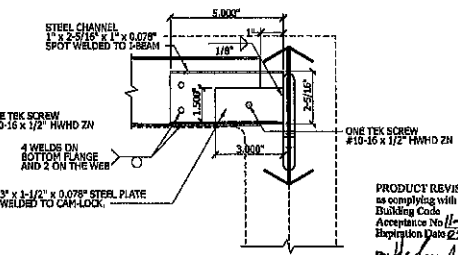
6 DETAIL 6
 SCALE: 1-1/2" = 1'-0"



7 DETAIL 7
 SCALE: 1-1/2" = 1'-0"



1-A DETAIL 1-A "2" BAR CONNECTION
 N.T.S. (EACH END) SCALE: 3" = 1'-0"



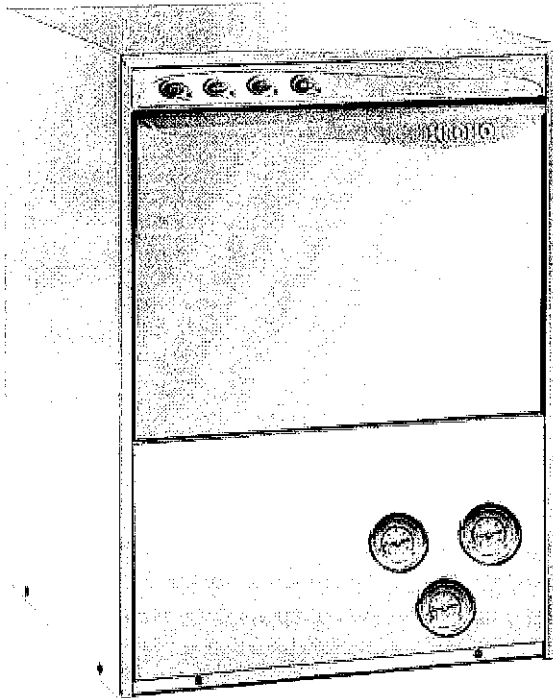
1-B DETAIL 1-B "1" BAR CONNECTION
 N.T.S. (EACH END) SCALE: 3" = 1'-0"

PRODUCT REVISED
 as complying with the Florida
 Building Code
 Acceptance No. 0425.02
 Expiration Date 03/10/2012
 By: *[Signature]*
 Miami Design Product Control



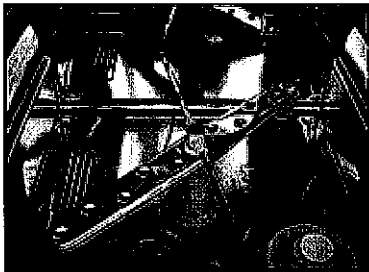
UC50e

High Temp Undercounter
Dishwasher And
Glasswasher

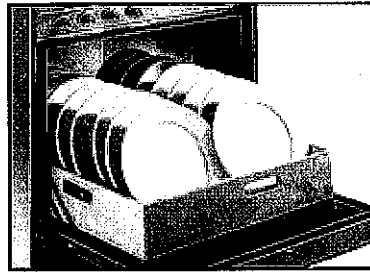


FEATURES:

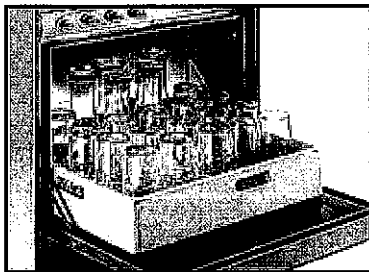
- 30 racks / 120 covers per hour.
- Double skin stainless steel provides consistent heating and a quiet operation.
- Operator friendly, removable stainless steel wash and rinse arms allows for easy cleaning.
- Fully automatic cycle for easy operation.
- Stainless steel safety filters protect washing pump.
- Door and water level safety switches, plus booster safety thermostat.
- Stainless steel molded rack supports, polished stainless steel surface and tanks with rounded corners for a total and easy cleaning.
- Built-in detergent and rinse chemical pumps.
- Triple filtering protection system, captures excess soil and debris.
- Pump drain allows for multiple installation applications including elevated drains.



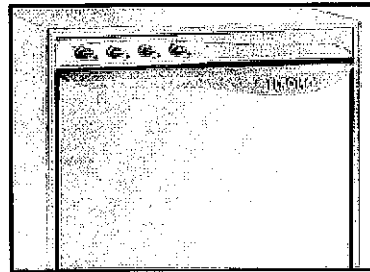
Upper and lower wash and rinse arms guarantee excellent results.



Large 13-3/4" door clearance accommodates oversized plates, glasses and utensils.



Uses standard 19-3/4" X 19-3/4" racks. Large 13-3/4" glass clearance.



Top mounted controls are easy to read and simple to operate.

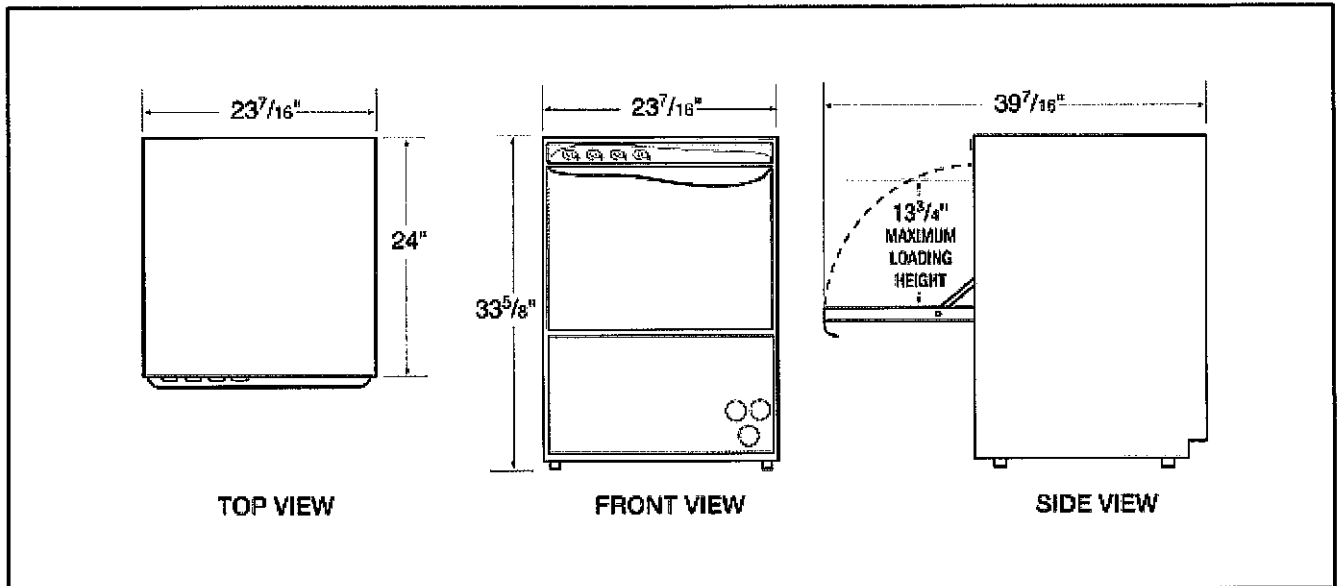




UC50e

High Temp Undercounter Dishwasher And Glasswasher

WARNING: Plumbing connections need to be made by a qualified service company who will comply with all available Federal, State, and Local Health, Plumbing and Safety codes.



Specifications:

MODEL UC50	USA	METRIC	USA	METRIC
OPERATING CAPACITY RACKS PER HOUR (NSF RATED)	30/20	30/20	WASH PUMP MOTORS HP 1 1	
OPERATING CYCLE WASH TIME-SEC RINSE TIME-SEC TOTAL CYCLE TIME	100/160 15/15 120/160	100/160 15/15 120/160	DIMENSIONS DEPTH 24" (61 CM) WIDTH $23\text{-}7\frac{7}{16}$ " (59.5 CM) HEIGHT $33\text{-}5\frac{1}{16}$ " (84.5 CM) MAXIMUM CLEARANCE HEIGHT FOR DISHES $13\text{-}3\frac{3}{4}$ " (35 CM)	
WASH TANK CAPACITY	6.87 GAL	(26 L)	STANDARD DISHRACK 1 1 DIMENSIONS $19\text{-}3\frac{3}{4}\text{X}19\text{-}3\frac{3}{4}$ " (50X50CM)	
OPERATING TEMPERATURE REQUIRED RECOMMENDED	160°F/180°F 160°F/180°F	(71°C/83°C) (71°C/83°C)	ELECTRICAL RATING VOLTS PHASE AMPS 220-240 1-50Hz 30	
WATER CONSUMPTION PER RACK PER HOUR WATER INLET DRAIN	.8 GAL 24GPH/16GPH 3/4" 1"	(3 L) (90LPH/60LPH) - -		

Summary Specifications:


The UC50e dishwasher and glasswasher is a front loading machine designed to produce sparkling clean glasses and dishes. Constructed of double walled stainless steel skin providing constant heating and a quiet operation. Standard features include upper and lower wash/rinse arms and wash and rinse tank heater.

KROMO BRANDS

Distributed exclusively by CMA Dishmachines



E-4 E-5 SIM.

 TRUE FOOD SERVICE EQUIPMENT, INC. 2001 East Terra Lane • O'Fallon, Missouri 63366 (636)240-2400 • Fax (636)272-2408 • (800)325-6152 • Intl Fax# (001)636-272-7546 Parts Dept. (800)424-TRUE • Parts Dept. Fax# (636)272-9471 • www.truemfg.com	Project Name: _____ Location: _____ Item #: _____ Qty: _____ Model #: _____	AIA # _____ SIS # _____
	Underbar Refrigeration: Glass Swing Door 24" Back Bar Cooler	
Model: TBB-24-60G		



TBB-24-60G






- True refrigerated back bar coolers are designed for maximum quality and value. Our commitment to bring the highest quality materials and varied refrigeration issues colder product temperatures and faster trouble-free service.
- Over-sized factory balanced refrigeration system holds 39 to 40° (3.5°C to 4.4°C).
- Exterior heavy-duty wear-resistant laminated black vinyl front and sides. Matched black aluminum back. All stainless steel countertop.
- Interior 390 series stainless steel floor with 1/2" (13 mm) reinforced and heavy gauge galvanized steel wall.
- NSF approved for packaged and bottled product.
- Positive seal door.
- Lower double-pane thermal glass door assemblies with rugged aluminum frames. The latest in energy efficient technology.
- Patented integrated door light (IDL) system for brighter shadow-free illumination.
- Entire cabinet structure is foamed in place to eliminate any new, innovative high density polyurethane insulation that has zero ozone depletion potential (ODP) and zero global warming potential (GWP).

ROUGH-IN DATA Specifications subject to change without notice.

Chart dimensions rounded up to the nearest 1/8" (millimeters rounded up to next whole number).

Model	Doors	Capacity			Cabinet Dimensions (inches) (mm)			HP	Voltage	Amps	NEMA Config.	Cord Length (total ft.) (total m)	Crated Weight (lbs.) (kg)
		12 oz. Cans	1/2 Barrels	Shelves	L	D†	H						
TBB-24-60G	2	133 6-pks	3	4	61 1/8	24-1/2	35 5/8	1/8	115/60/1	7.7	5-15P	7	335
					1553	623	905	1/8	230-240/50/1	3.7	▲	2.13	152

† Depth does not include 1 3/8" (35 mm) for door handles and 1" (26 mm) for rear bumpers. ▲ Plug type varies by country.

    	APPROVALS: _____ _____	AVAILABLE AT: _____ _____
Printed in U.S.A.		

Model:
TBB-24-60G

Underbar Refrigeration: Glass Swing Door 24" Back Bar Cooler

STANDARD FEATURES

DESIGN

- True's refrigerated back bar coolers are designed with enduring quality and value. Our commitment to using the highest quality materials and oversized refrigeration assures colder product temperatures and years of trouble free service.

REFRIGERATION SYSTEM

- Factory engineered, self-contained, capillary tube system using environmentally friendly (CFC free) 134A refrigerant.
- Extra large evaporator coil balanced with higher horsepower compressor and large condenser; maintains cabinet temperatures of 33°F to 38°F (.5°C to 3.3°C).
- Sealed, cast iron, self-lubricating evaporator fan motor(s) and larger fan blades give True back bar coolers a more efficient low velocity, high volume airflow design. This unique design ensures faster temperature pull down of warm product, colder holding temperatures and faster recovery in high use situations.
- Condensing unit accessed from behind front grill, slides out for easy cleaning and maintenance.

CABINET CONSTRUCTION

- Exterior - heavy duty, wear resistant laminated black vinyl front and sides. Matching black aluminum back. All stainless steel counter top.
- Interior - 300 series stainless steel floor with 1/2" (13 mm) reinforced lip and heavy gauge galvanized steel walls.
- Door threshold protector prevents damage to cabinet from routine loading of product.

- Insulation - entire cabinet structure is foamed-in-place using Ecomate. A new, innovative, high density, polyurethane insulation that has zero ozone depletion potential (ODP) and zero global warming potential (GWP).
- Welded, heavy duty steel frame rail, black powder coated for corrosion protection.

DOORS

- "Low-E", double pane thermal insulated glass door assemblies with extruded aluminum frames. The latest in energy efficient technology.
- Each door fitted with 12" (305 mm) long extruded aluminum handle.
- Positive seal doors.
- Magnetic door gaskets of one piece construction, removable without tools for ease of cleaning.
- Door locks standard.

SHELVING

- Four (4) adjustable, heavy duty, black PVC coated wire shelves 23 3/4" L x 18" D (604 mm x 458 mm). Four (4) chrome plated shelf clips included per shelf.
- Aluminum shelf support pilasters. Shelves are adjustable on 1/2" (13 mm) increments.

LIGHTING

- Fluorescent interior lighting. Each door utilizes full-length, patented, integrated door light (IDL) system. Safety shielded.
- Cabinet lighting utilizes electronic ballast and T-8 bulbs for brighter illumination, longer bulb life and increased energy efficiency.

MODEL FEATURES

- Evaporator is epoxy coated to eliminate the potential of corrosion.
- Designed to accommodate a variety of beer kegs.
- Listed under NSF-7 for the storage and/or display of packaged or bottled product.

ELECTRICAL

- Unit completely pre-wired at factory and ready for final connection to a 115/60/1 phase, 15 amp dedicated outlet. Cord and plug set included.



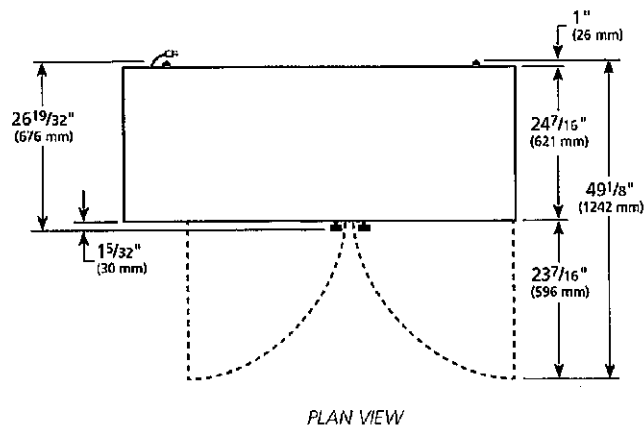
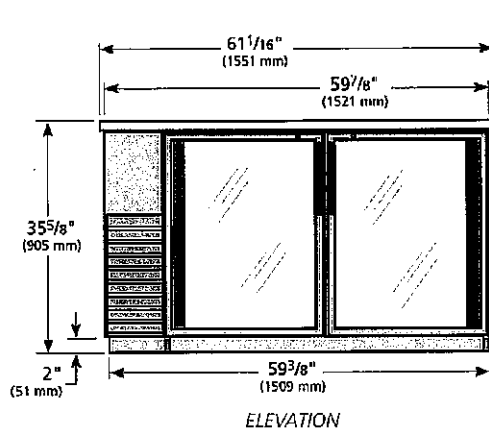
115/60/1
NEMA-5-15R

OPTIONAL FEATURES/ACCESSORIES

Upcharge and lead times may apply.

- 230 - 240V / 50 Hz.
- 6" (153 mm) standard legs.
- 6" (153 mm) seismic/flanged legs.
- 2 1/2" (64 mm) diameter castors.
- 4" (102 mm) diameter castors.
- Additional shelves.
- Remote cabinets (condensing unit supplied by others; system comes standard with 404A expansion valve and requires R404A refrigerant). Consult factory technical service department for BTU information. All remote units must be hard wired during installation.

PLAN VIEW



WARRANTY
One year warranty on all parts and labor and an additional 4 year warranty on compressor (U.S.A. only)

METRIC DIMENSIONS ROUNDED UP TO THE NEAREST WHOLE MILLIMETER
SPECIFICATIONS SUBJECT TO CHANGE WITHOUT NOTICE



Model	Elevation	Right	Plan	3D	Back
TBB-24-60G	TFJX47E	TFJX47S	TFJX47P	TFJX473	

TRUE FOOD SERVICE EQUIPMENT

2001 East Terra Lane • O'Fallon, Missouri 63366 • (636)240-2400 • Fax (636)272-2408 • (800)325-6152 • Intl. Fax# (001)636-272-7546 • www.truefmfg.com

E-6

Indigo™ Series 322 Ice Cube Machine

Model: ID-0322A IY-0324A ID-0323W IY-0325W



Indigo Series i-322 Ice Machine on B-320 Bin

Designed for operators who know that ice is critical to their business, the Indigo™ Series ice machine's preventative diagnostics continually monitor itself for reliable ice production. Improvements in cleanability and programmability make your ice machine easy to own and less expensive to operate.

- **Space-Saving Design** – Up to 350 lbs. (159 kgs.) daily ice production and only 22" (55.88 cm) wide.
- **Intelligent Diagnostics** – provide 24 hour preventative maintenance and diagnostic feedback for trouble free operation.
- **Acoustical Ice Sensing Probe** – for reliable operation in challenging water conditions.
- **EasyRead Display** – communicates operating status, cleaning reminders, and asset information through a blue illuminated display.
- **Programmable Ice Production** – by On/Off Time, Ice Volume or Bin Level (with accessory bin level control) further improves energy efficiency and savings.
- **Easy to Clean Foodzone** – Hinged front door swings out for easy access. Removable water-trough, distribution tube, curtain, and sensing probes for fast and efficient cleaning. Select components made with AlphaSan® antimicrobial.
- **DuraTech™ Exterior** – provides superior corrosion resistance. Stainless finish with innovative clear-coat resists fingerprints and dirt.
- Available **LuminIce™ Growth Inhibitor** controls the growth of bacteria and yeast within the foodzone.

Ice Machine Electric

115/60/1 standard.
(208-230/60/1 and 230/50/1 also available)

Minimum circuit ampacity:	Maximum fuse size:
Air-cooled: 11.5 1ph	Air-cooled: 15 amps
Water-cooled: 10.7 1ph	Water-cooled: 15 amps

Specifications

BTU Per Hour:
3,300 (average) 4,500 (peak)

Refrigerant:
R-404A CFC-free

- Operating Limits:**
- Ambient Temperature Range: 35° to 110°F (1.7° to 43.3°C)
 - Water Temperature Range: 35° to 90°F (1.7° to 32.2°C)
 - Water Pressure Ice Maker Water In: Min. 20 psi (137.9 kPa) Max. 80 psi (551.1 kPa)



Ice Shape

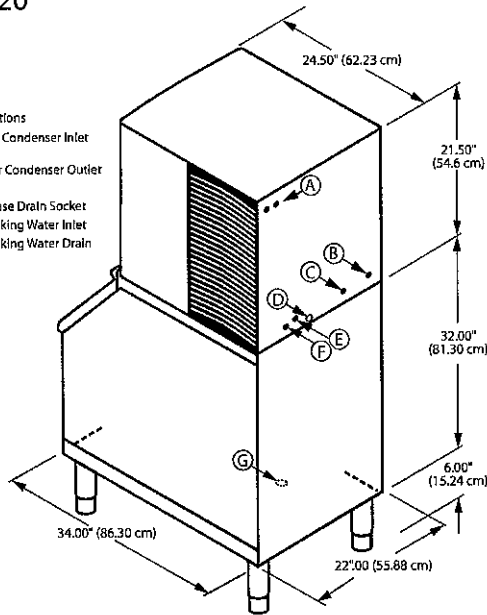




Indigo™ Series 322 Ice Cube Machine

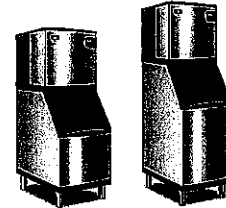
i-322 on B-320 Storage Bin

- Ⓐ Electrical Entrance (2) Options
- Ⓑ 3/8" (0.95 cm) F.P.T. Water Condenser Inlet (water-cooled units)
- Ⓒ 1/2" (1.27 cm) F.P.T. Water Condenser Outlet (water-cooled units)
- Ⓓ 1/2" (1.27 cm) Auxiliary Base Drain Socket
- Ⓔ 3/8" (0.95 cm) F.P.T. Ice Making Water Inlet
- Ⓕ 1/2" (1.27 cm) F.P.T. Ice Making Water Drain
- Ⓖ 3/4" (1.91 cm) Bin Drain



Installation Note
Minimum installation clearance:
Top/side: 12" (30.50 cm)
Back is 5" (12.7 cm)

Space-Saving Designs



	i-322 B-320	i-322 B-420
Height	59.50" 151.13 cm	71.50" 181.61 cm
Width	22.00" 55.88 cm	22.00" 55.88 cm
Depth	34.00" 86.30 cm	34.00" 86.30 cm
Bin Storage	210 lbs. 95 kgs.	310 lbs. 141 kgs.

Height includes adjustable bin legs 6.00" to 8.00"
(15.24 to 20.32 cm) set at 6.00" (15.24 cm).

Specifications

	Model	Ice Shape	Ice Production 24 Hours		Power Usage kWh/100 lbs. @90°Air/70°F	Water Usage/100 lbs. 45.4 kgs. of Ice		ENERGY STAR*
			70°Air/ 50°F Water	90°Air/ 70°F Water		Potable Water		
AIR-COOLED	ID-0322A	dice	335 lbs.	225 lbs.	7.49	23.9 Gal.	★	
			152 kgs.	102 kgs.		90.5 L		
	IY-0324A	half-dice	350 lbs.	230 lbs.	7.32	23.9 Gal.	★	
			159 kgs.	104 kgs.		90.5 L		
WATER-COOLED	ID-0323W	dice	330 lbs.	270 lbs.	6.19	23.9 Gal.	NA	
			150 kgs.	122 kgs.		90.5 L		
	IY-0325W	half-dice	350 lbs.	290 lbs.	5.94	23.9 Gal.	NA	
			159 kgs.	132 kgs.		90.5 L		

* Water-cooled Condenser Water Usage / 100 lbs. /45.4 kgs. Of Ice: 193 gal/731 L.

* Water-cooled models are excluded from ENERGY STAR qualification.

Order ice storage bin separately.

Accessories

LuminIce™ Growth Inhibitor
reduces yeast and bacteria growth for a cleaner ice machine.



Bin Level Control
Allows ice bin level to be automatically set. Built-in LED light illuminates bin.



Arctic Pure® Water Filters
Reduces sediment and chlorine odors for better tasting ice.



AuCS®
schedules and performs routine ice machine cleaning automatically.

